

Company portrait MPS Ltd.

Manufacturing systems engineering

Produktion engineering

Service

Your service provider in mechanical engineering

Details to mps...



- ▶ MPS stands for mechanical engineering, production engineering and services
- ▶ Establishment in May 1998
- ▶ Chief executive is Holger Winnai
- ▶ Our service portfolio includes:
 - ▶ Services
 - ▶ Reconstruction, reconditioning and relocation of machines
 - ▶ Technical consulting
 - ▶ manufacturing and module assembly

Numbers, details and facts



► **Revenue:** **4.790.000 € in 2024**

► **Employees:** **35**

► **Quality:** **Certification in accordance to
DIN EN ISO 9001:2015**



► **Locations:** **71686 Remseck
Neckaraue 25 (headquarters)**

**66914 Waldmohr
Industriestraße 1b (branch southwest)**

Headquarters

71686 Remseck, Neckaraue 25



Branch Southwest

66914 Waldmohr, Industriestrasse 1b



Overview of our product and range of services



- ▶ **Complete reconstruction of production plant (area machining)**
- ▶ **Complete Reconditioning of available production plants (focus machining)**
- ▶ **Consulting support**
- ▶ **Preparation of expert report**
- ▶ **Engineering order planning, order processing**
- ▶ **Overall responsibility for location transfer**

Our product and range of services in detail



Complete Reconditioning of available production plants (main focus machining)

- ▶ Manufacture of special spare parts, if necessary (according to own construction or drawing template)
- ▶ Delivery
- ▶ Mounting
- ▶ Documentation
- ▶ Create acceptance report

Our product and range of services in detail



Consulting support

- ▶ For internal planning task to build up and/or relocation of new production capacity
- ▶ Efficiency analyze of available machines/Production lines (Area machining)

Preparation of expert report

- ▶ about productive operation available manufacturing plants
- ▶ Budget determination for reparation, preventive maintenance and new acquisition

Engineering order planning, order processing

- ▶ Technical purchasing execution and coordination
- ▶ Personal coordination for processing new machines and reconstruction.
- ▶ Order planning and scheduling for new machines and reconstruction.

Our product and range of services in detail



Overall responsibility for location shifting

- ▶ Individual plants
- ▶ Complete production lines
- ▶ Complete assembly plants

This package includes the following performance points:

- ▶ Solely responsible takeover of entire logistic transport, including the required vehicles, transportation equipment and insurance (if required)
- ▶ Coordination of qualified mounting personals and machines producers.
- ▶ Disposition of special vehicles, truck and mobile crane ect.
- ▶ Commissioning (mechanical, electrical) with machine capability inspection
- ▶ Purchase support of functional machines and plants.
- ▶ Dispose of machinery and equipment with evidence.

Performance example:

Capabilities truck with special trailer



Truck Mercedes-Benz Actros with special trailer for machine transports

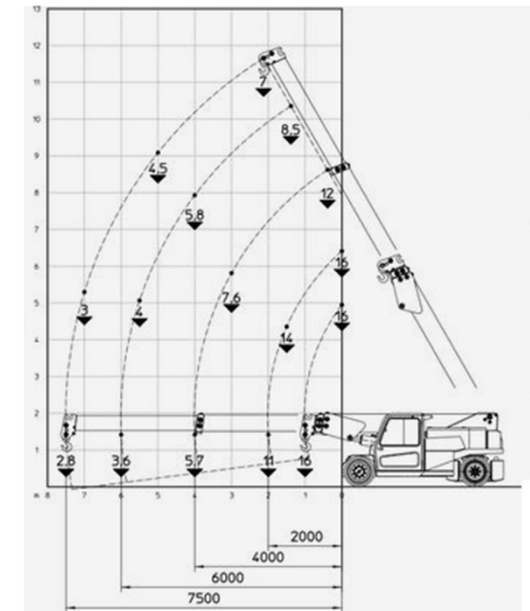
With our equipment we conduct machine transports for you. Thereby you benefit from execution „one-stop“.

- crankable rear
- drivable ramp for 25 to
- inside height 3,10 m
- pluggable stanchion for the form fit for heavy load, frap boxes for heavy-duty chains



Capabilities cabin-controlled portable crane

A red mobile crane with a telescopic boom is shown in profile, lifting a yellow container. The crane is positioned on a dark surface, and the background is a clear blue sky. The crane's boom is extended upwards and to the right, with the yellow container hanging from its hook. The crane's body is red with some black and white markings. The yellow container is rectangular and has some text on it, though it is not clearly legible. The crane's boom has several hydraulic cylinders and cables visible. The overall scene is a construction or industrial setting.



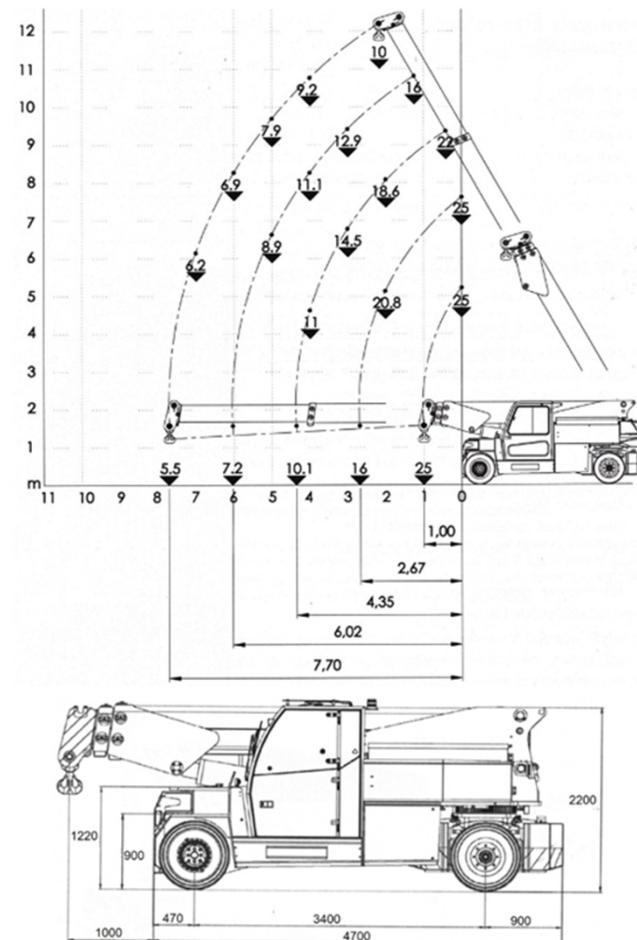
Performance example:

Capabilities cabin-controlled portable crane



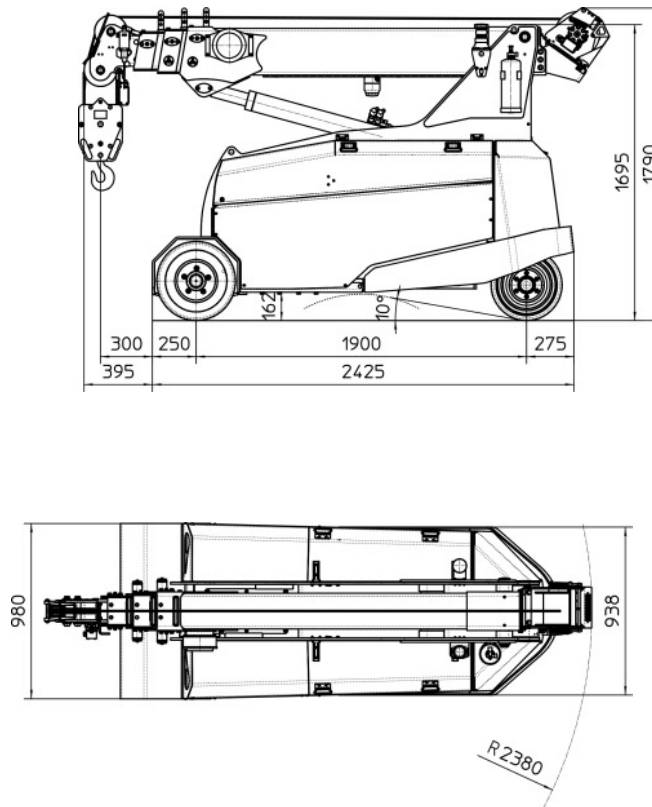
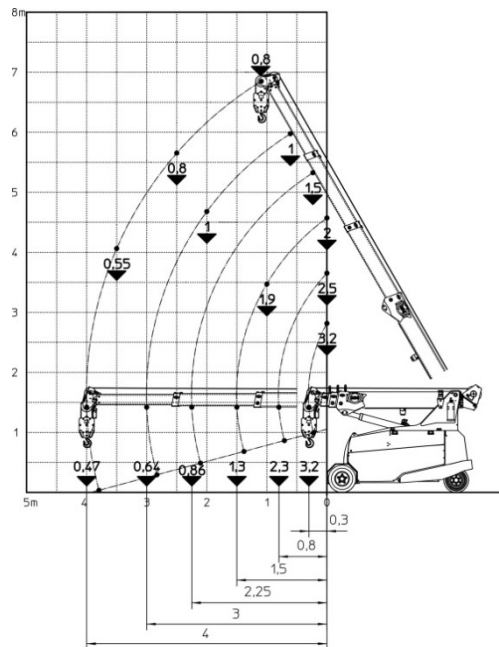
Cabin-controlled portable crane JMG Cranes MC250

(carrying capacity max. 25 t)



Performance example: Capabilities mini crane

Mini crane



Performance example:

Transfer and reconstruction flat head assembly



Performance example:

Deassembly and reassembly transfer processing



Deassembly and reassembly of a Mauser Krauseco transfer processing cylinder head preprocessing including implementing and machine capability inspection (MFU Cmk 1.67).



Performance example: Roboter programming



Disassembly and reassembly
with implementing a robot
cell with 150 tool holder.



Performance example: Contribution 38 T press



Contribution of a 38 T press
with 60 T chassis.



Performance example:

Disassembly and Reassembly SMG press



Disassembly and Reassembly with implementing of a 1300 T stage press from SMG in Hungary for a German client.



Performance example:

Disassembly and Reassembly machine facilities with robots



Disassembly and Reassembly of belt conveyor, linkages, robots und machine facilities, support trial operation, robots-programming for the commissioning or optimising.



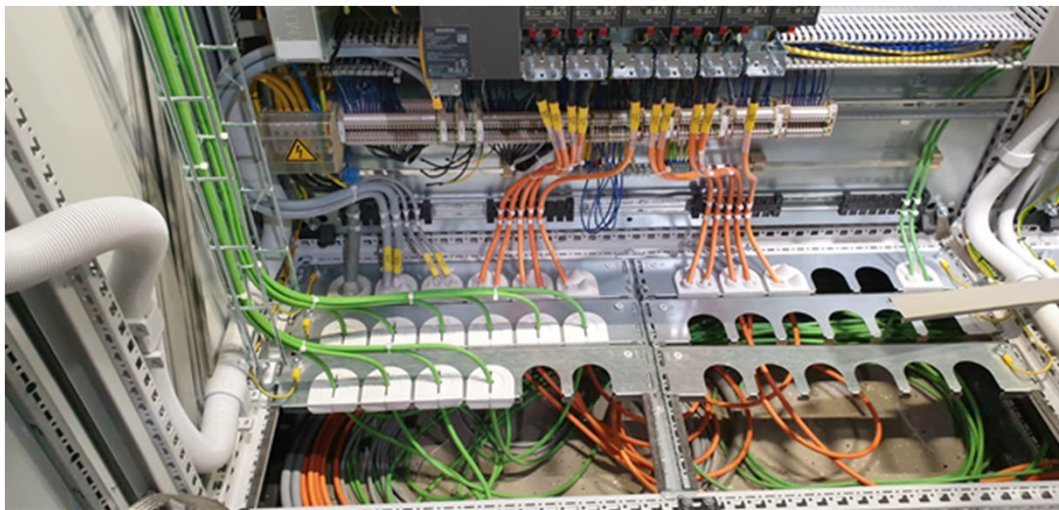
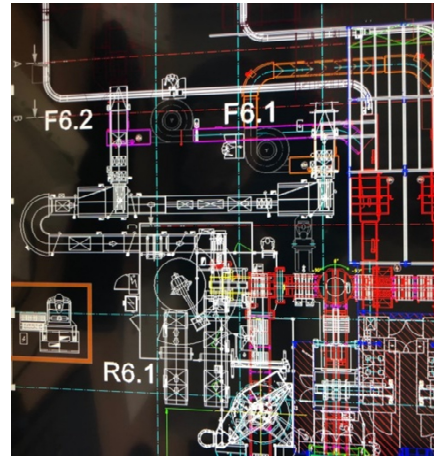
Performance example:

New assemblies accounting to CAD LAYOUT of Palletizing technology and Conveyor belt systems (mechanically, pneumatic, electric, including commissioning)



Worldwide assembly of:

Palletizing technology,
Conveyor belt systems in
Food- and Non-Food-area
for different customers



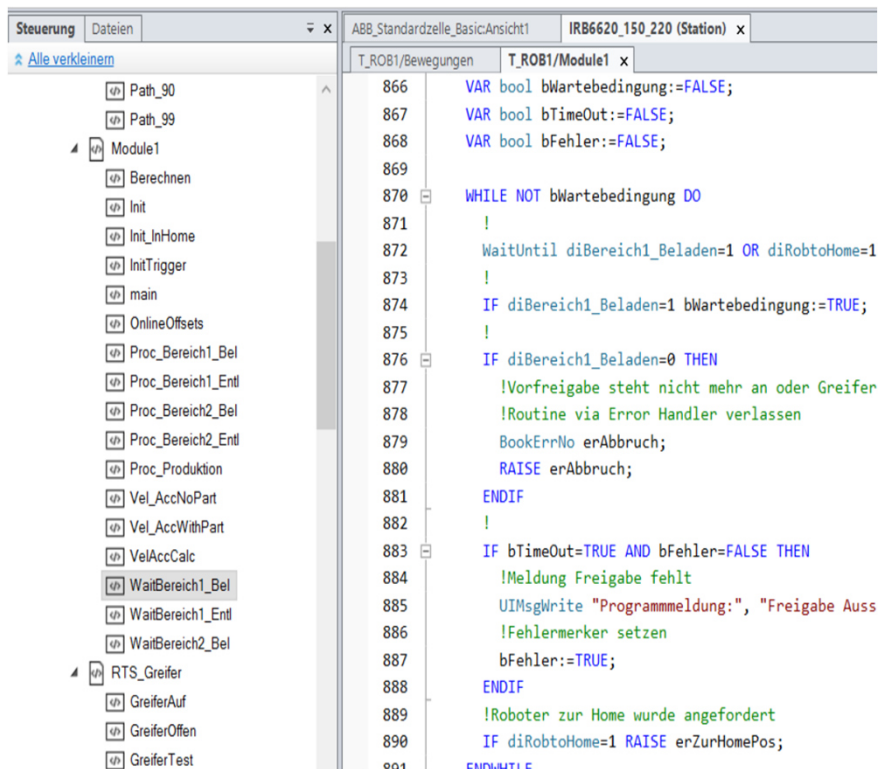
Performance example: Set-up factory infrastructure



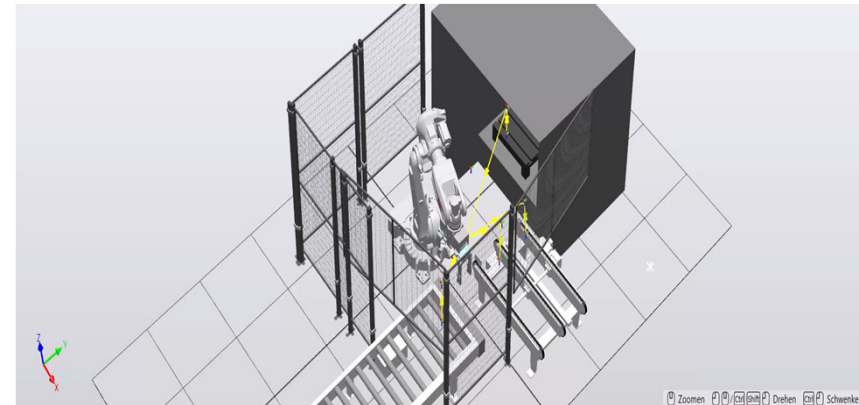
Performance example:

Robotics and automation

Program routines, source code, demo, standardized loading and unloading of a machining center



```
866 VAR bool bWartebedingung:=FALSE;
867 VAR bool bTimeOut:=FALSE;
868 VAR bool bFehler:=FALSE;
869
870 WHILE NOT bWartebedingung DO
871 !
872 WaitUntil diBereich1_Beladen=1 OR diRobtoHome=1
873 !
874 IF diBereich1_Beladen=1 bWartebedingung:=TRUE;
875 !
876 IF diBereich1_Beladen=0 THEN
877 !Vorfregabe steht nicht mehr an oder Greifer
878 !Routine via Error Handler verlassen
879 BookErrNo erAbbruch;
880 RAISE erAbbruch;
881 ENDIF
882 !
883 IF bTimeOut=TRUE AND bFehler=FALSE THEN
884 !Meldung Freigabe fehlt
885 UIMsgWrite "Programmmeldung:", "Freigabe Auss
886 !Fehlermerker setzen
887 bFehler:=TRUE;
888 ENDIF
889 !Roboter zur Home wurde angefordert
890 IF diRobtoHome=1 RAISE erZurHomePos;
891 ENDWHILE
```



Performance example:

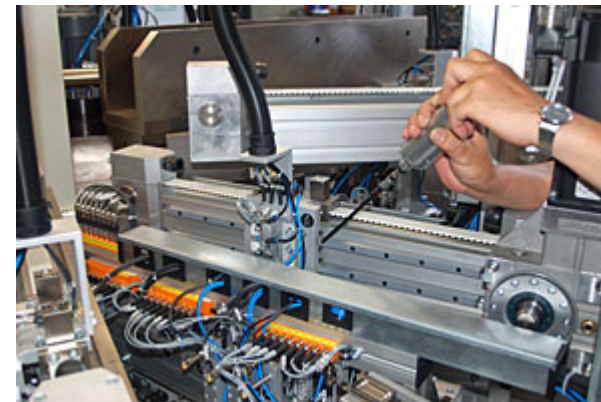
Maintenance and checks



Performance example: qualified employees for operations like:

Support maintenance, setup and installation of electrical und mechanical constructions:

- electrotechnology
- mechanics
- hydraulic systems
- pneumatics
- special purpose machinery manufacture, steel manufacture, ...



Checks and service:

- DGUV 3 (German social accident insurance, place-unchanging electrical devices)
- thermography
- crane DGUV 52
- stock facility DGUV Regel 108-007
- winch, liftig and drawing device DGUV 54
- others on request



Thank you for your attention!

MPS GmbH
Headquarters
Neckaraue 25
71686 Remseck

CEO Holger Winnai

Telefon +49 (0) 7146 / 87 30 - 40
Fax +49 (0) 7146 / 87 30 - 46

E-Mail
Internet

MPS GmbH
Branch Southwest:
Industriestr. 1 b
66914 Waldmohr

COO Peter Krämer

Telefon +49 (0) 6373 / 50883 - 0
Fax +49 (0) 6373 / 50883 - 29

info@mps-remseck.de
www.mps-remseck.de